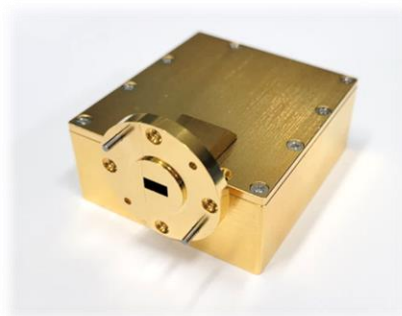


AQ08-01A

37500MHz ~ 42500MHz 8W SSPA

General Description

The AQ08-01A is a general SSPA module that have high linearity & gain performance. The module features a flat high gain with excellent current consumption.



Applications

- Satellite system
- EMC/EMI test
- Scientific measurement system
- Medical equipment

Electrical Specification

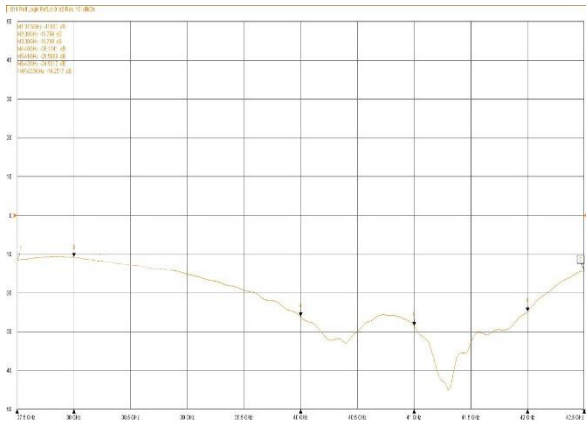
Parameter	Specification	Comment
Frequency	37500 ~ 42500MHz	
Output Power	38dBm	Psat
Gain Flatness	± 1 dB	Psat
Input Power for rated output power	0	Typ.
Input Return Loss	-10 dB	
Current Consumption	3.8A	Typ. @38dBm
Operating voltage	12V _{DC}	

Power / Data Connector, M80-5400842, 8-pin

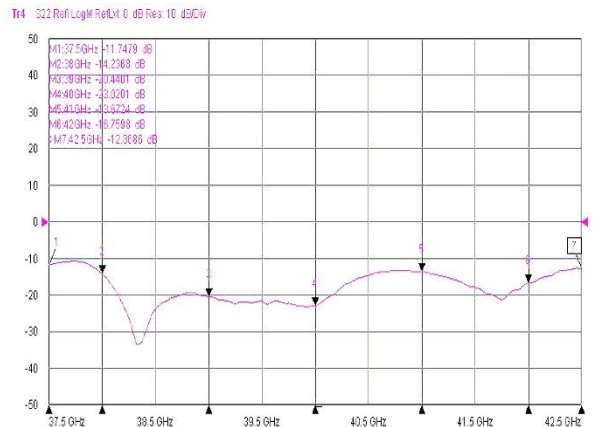
Pin	Specification	Comment
1	V _{DC}	Temp Out @-11.77mV/°C
2	0.4V	Power Detect
3,4	+12V	V _{DC}
5	TTL _{HIGH}	External
6,7,8	GND	

Performance Plot

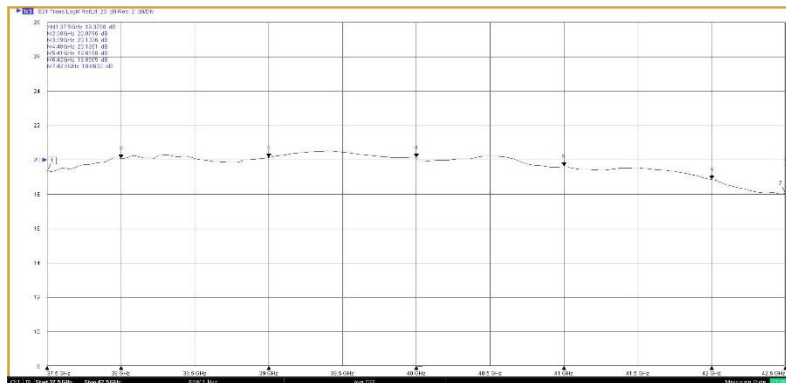
Plot 1 – Input Return Loss
 Curve: S11@ P_{IN} = -20dBm
 Scale: 10dB/div.



Plot 2 – Input Return Loss
 Curve: S11@ P_{IN} = -20dBm
 Scale: 10dB/div.



Plot 3 - Small Signal
 Curve: Small Signal Gain @ P_{IN} = -20dBm
 Scale: 2dB/div. Output Attenuator: -31dB



AQ08-01A

37500MHz ~ 42500MHz 8W SSPA

Mechanical specification

